

Über 200 Muster über die ganze Schweiz repräsentieren diese Resultate.

Jahr	hl-	Fallzahl	Protein	Feucht-	Gluten-	Sedi	Konsi-
	Gewicht	F	NIR	kleber	index	Zeleny	stenz
	(kg)	(sec)	(%, TS)	(%)		(ml)	(BE)

Runal

Ø 2011	83.0	329.3	14.4	34.0	58.0	64.9	724.0
Ø 2010	82.0	379.4	15.0	33.5	57.6	54.5	701.1
Ø 2009	83.8	349.7	13.1	28.8	77.2	61.3	738.9
Ø 2008	83.0	323.3	14.0	32.7	64.0	66.9	672.7
Ø 2007	81.9	280.1	13.5	32.2	73.6	64.4	716.4
Ø 2006	85.0	364.5	13.9	33.5	66.6	59.4	806.6
Ø 2005	83.5	321.0	13.5	32.7	85.0	65.0	701.0

Claro

Ø 2011	82.6	333.5	13.2	28.7	71.1	65.1	719.2
Ø 2010	82.6	391.3	14.2	29.7	60.6	54.7	734.5

Siala

Ø 2011	83.1	314.7	13.8	31.1	64.5	66.7	748.5
Ø 2010	84.8	388.1	14.7	32.1	52.8	52.4	754.5
Ø 2009	82.9	347.0	13.0	27.7	74.9	60.1	786.5
Ø 2008	83.7	343.0	13.6	30.3	66.8	66.2	670.7
Ø 2007	82.1	240.5	13.1	28.2	80.1	63.5	754.8

Arina

Ø 2011	83.3	327.4	14.5	35.5	38.1	66.5	620.5
Ø 2010	85.0	395.2	14.5	33.0	39.2	52.5	587.2
Ø 2009	83.6	327.2	13.6	31.9	47.8	60.5	666.1
Ø 2008	85.1	325.0	13.9	33.1	40.4	61.2	577.1
Ø 2007	83.7	258.8	13.8	35.2	39.3	56.7	642.9
Ø 2006	85.9	367.7	14.1	35.7	48.1	54.8	731.0
Ø 2005	82.6	312.0	13.8	34.7	60.0	61.0	650.0

Zinal

Ø 2011	83.4	346.9	13.2	26.6	77.2	63.1	590.1
Ø 2010	84.3	420.7	14.0	26.9	79.2	53.2	593.2
Ø 2009	83.4	354.5	12.6	24.2	89.8	58.4	627.5
Ø 2008	83.9	344.5	13.6	27.9	75.7	63.7	576.8
Ø 2007	82.7	269.4	13.3	28.4	76.9	60.8	641.6
Ø 2006	85.5	383.3	13.4	27.6	80.1	52.9	668.7
Ø 2005	82.6	290.0	13.1	27.3	92.0	59.0	589.0

Forel

Ø 2011	84.5	377.5	13.3	27.7	80.4	69.9	678.1
Ø 2010	84.9	444.0	13.7	26.3	85.1	60.9	669.4

Ludwig

Ø 2011	82.7	302.7	12.8	25.8	70.3	63.9	528.2
Ø 2010	83.3	388.0	13.3	26.5	73.0	53.5	553.0
Ø 2009	82.1	316.6	12.0	23.9	81.7	57.2	605.9
Ø 2008	82.5	333.4	13.3	27.2	63.0	60.9	499.6
Ø 2007	81.1	255.2	13.1	28.9	59.0	59.5	593.8
Ø 2006	83.5	382.0	13.0	26.9	75.7	53.3	678.3

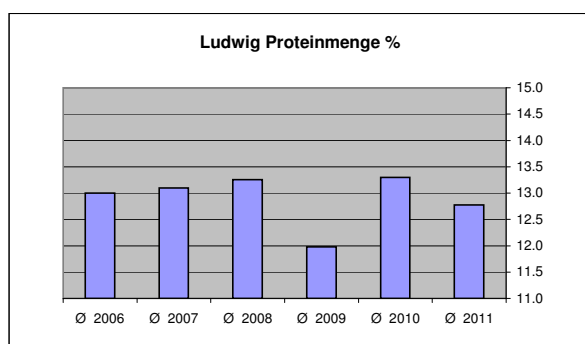
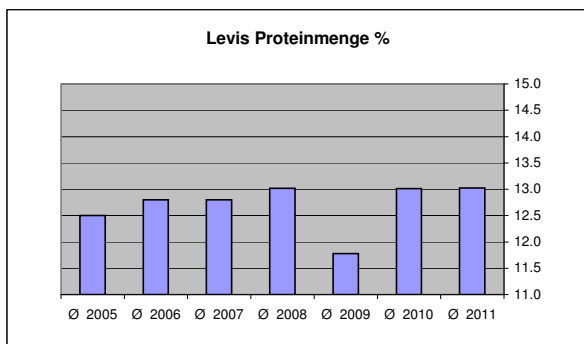
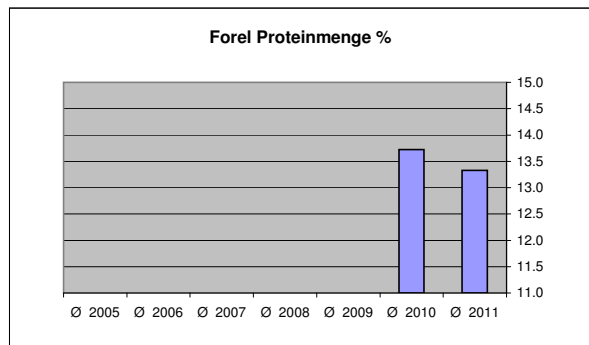
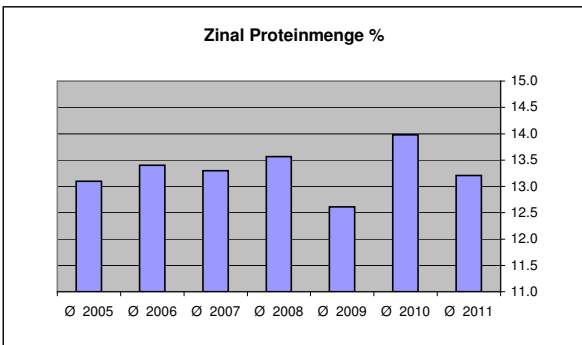
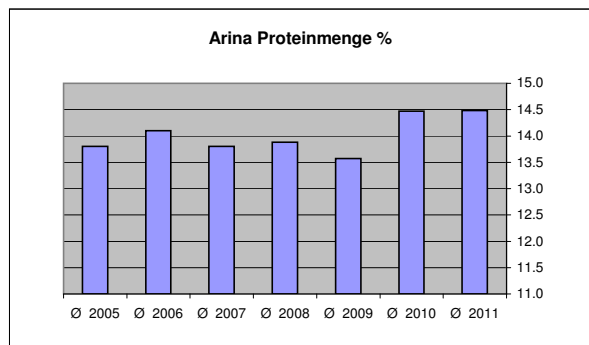
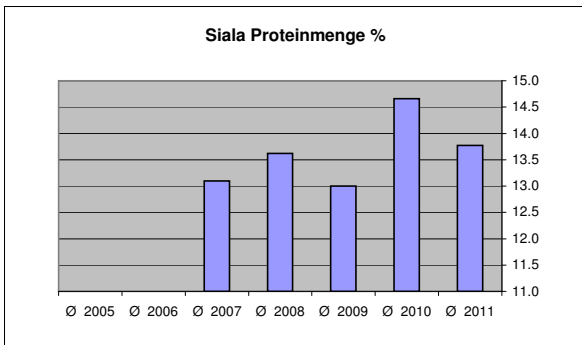
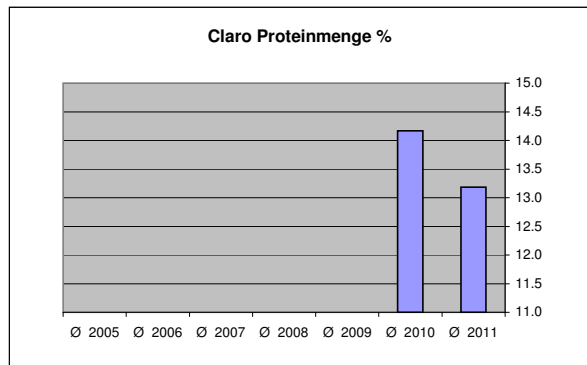
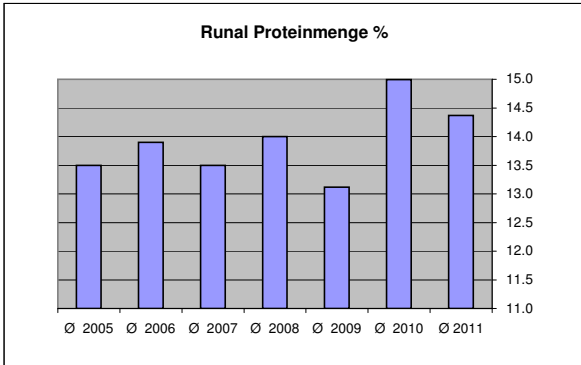
Levis

Ø 2011	82.8	348.3	13.0	25.9	89.8	65.7	556.1
Ø 2010	84.1	433.8	13.0	25.2	91.8	56.0	577.4
Ø 2009	81.7	367.4	11.8	23.9	93.1	60.1	580.2
Ø 2008	84.1	379.0	13.0	26.8	91.2	65.7	546.9
Ø 2007	83.1	265.4	12.8	28.2	88.8	69.2	624.0
Ø 2006	85.0	412.7	12.8	26.5	93.1	55.5	663.7
Ø 2005	81.0	358.0	12.5	26.9	97.0	60.0	594.0

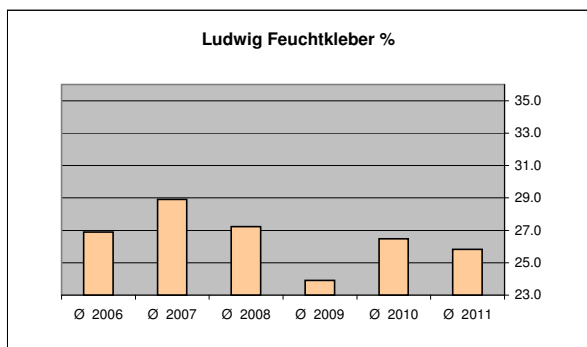
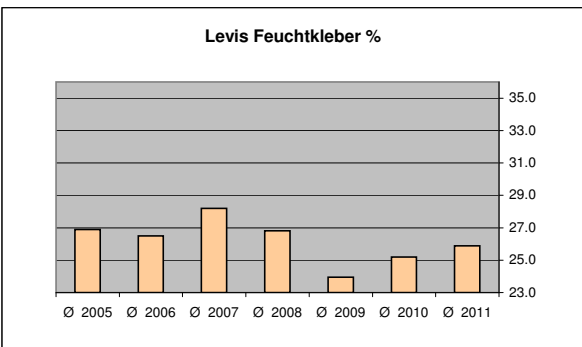
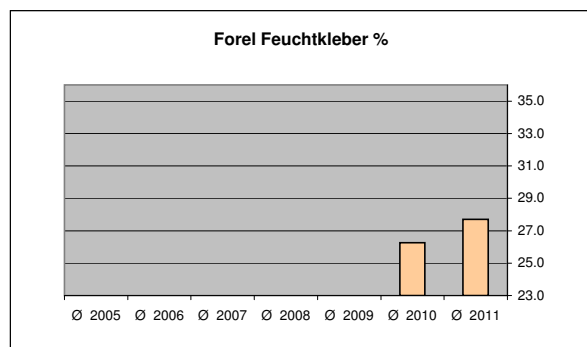
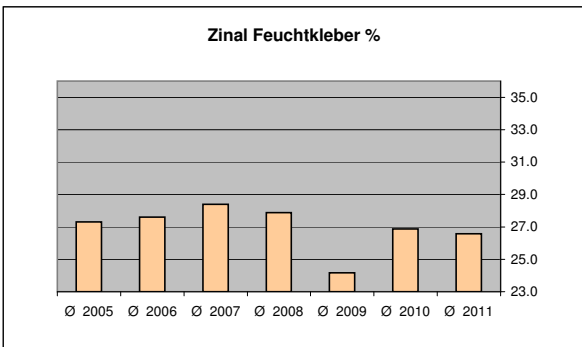
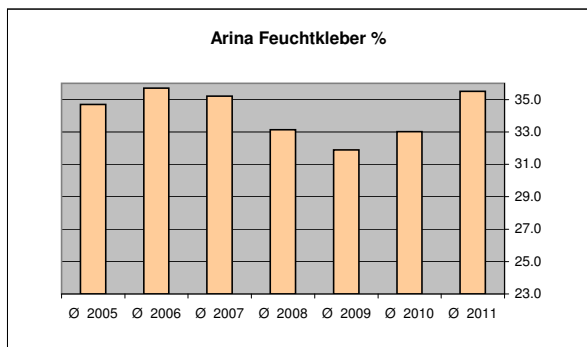
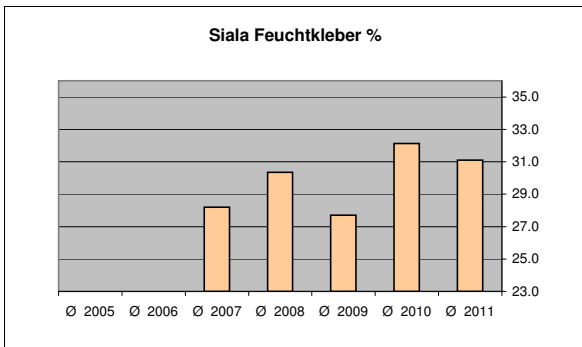
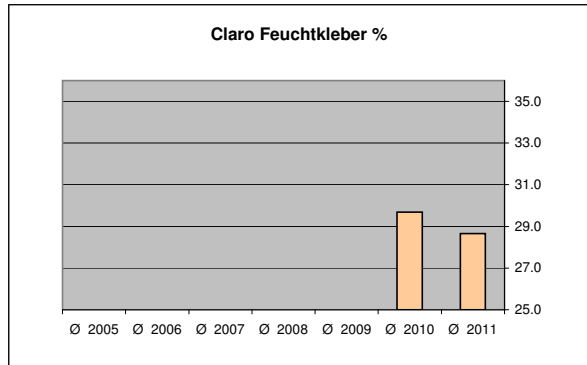
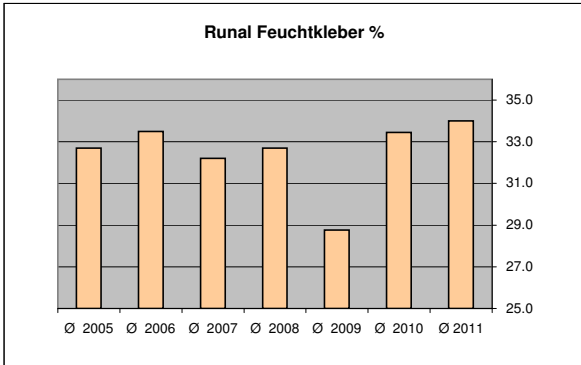
Manhattan

Ø 2011	80.6	295.8	11.9	24.5	51.9	32.0	453.9
Ø 2010	78.3	354.4	12.0	25.3	57.7	32.8	435.1

Vergleich Proteinmengen 05 -11



Vergleich Feuchtkleber 05 - 11



Vergleich Zeleny 05 - 11

